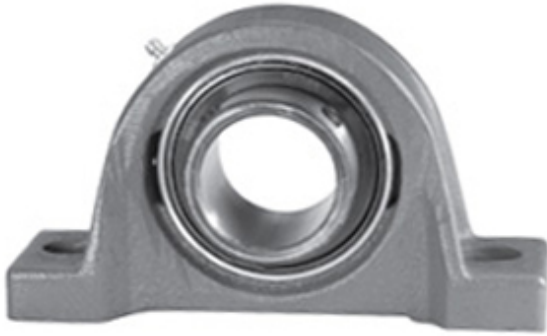




Wuxi LZH Bearing Co., Ltd.

1.438 Inch | 36.525 Millimeter x 1.766 Inch |
 44.85 Millimeter x 1.875 Inch | 47.63 Millimeter
 LINK BELT P3U223Z24 Pillow Block Bearings



Bearing No. P3U223Z24

P3U223Z24 Bearing 2D drawings and 3D CAD models

Category	Pillow Block Bearings
Inventory	0.0
Manufacturer Name	REXNORD
Minimum Buy Quantity	N/A
Weight	1.68
EAN	0662327424558
Product Group	M06110
Number of Mounting Holes	2
Mounting Method	Set Screw
Housing Style	2 Bolt Pillow Block
Rolling Element	Ball Bearing
Housing Material	Cast Iron
Expansion / Non-expansion	Non-expansion
Mounting Bolts	1/2 Inch
Relubricatable	Yes
Insert Part Number	UG223L
Housing Configuration	1 Piece Solid
Inch - Metric	Inch
Other Features	Single Row Standard Duty Standard Backing Wide Inner Race
Long Description	2 Bolt Pillow Block; 1-7/16" Bore; 1-7/8" Base to Center Height; Set Screw Mount; Ball Bearing; Relubricatable; Cast Iron; Non-expansion



Wuxi LZH Bearing Co., Ltd.

Category	Pillow Block
UNSPSC	31171511
Harmonized Tariff Code	8483.20.40.40
Noun	Bearing
Keyword String	Pillow Block
Manufacturer URL	http://www.rexnord.com
Manufacturer Item Number	P3U223Z24
Manufacturer Internal Number	5842455
Weight / LBS	3.7
B	1.875 Inch 47.63 Millimeter
Bolt Spacing Minimum	0 Inch 0 Millimeter
d	1.438 Inch 36.525 Millimeter
Nominal Bolt Center to Center	5 Inch 127 Millimeter
Bolt Spacing Maximum	0 Inch 0 Millimeter
D	1.766 Inch 44.85 Millimeter
Actual Bolt Center to Center	4.9 Inch 125.4 Millimeter