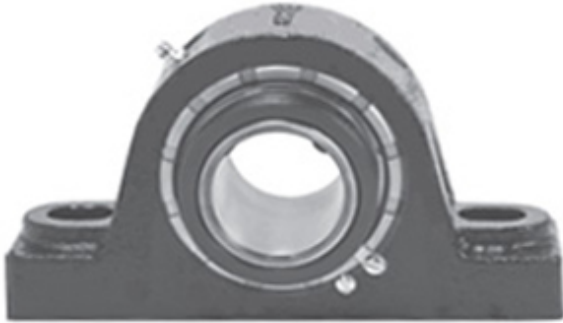




Wuxi LZH Bearing Co., Ltd.

3.938 Inch | 100.025 Millimeter x 5.063 Inch |
128.59 Millimeter x 4.25 Inch | 107.95 Millimeter
LINK BELT PB22463H18W4 Pillow Block
Bearings



Bearing No. PB22463H18W4

PB22463H18W4 Bearing 2D drawings and 3D CAD models

Category	Pillow Block Bearings
Inventory	0.0
Manufacturer Name	REXNORD
Minimum Buy Quantity	N/A
Weight	26.79
EAN	0793699250374
Product Group	M06288
Number of Mounting Holes	2
Mounting Method	Concentric Collar
Housing Style	2 Bolt Pillow Block
Rolling Element	Spherical Roller Bearing
Housing Material	Cast Iron
Expansion / Non-expansion	Non-expansion
Mounting Bolts	1 Inch
Relubricatable	Yes
Insert Part Number	B22463HL
Seals	Floating Labyrinth
Housing Configuration	1 Piece Solid
Inch - Metric	Inch
Other Features	Double Row Single Collar Extended Inner Race With Set Screw
Long Description	2 Bolt Pillow Block; 3-15/16" Bore; 4-1/4" Base to Center Height;



Wuxi LZH Bearing Co., Ltd.

	Concentric Collar Mount; Spherical Roller Bearing; Relubricatable; Cast Iron; Floating Labyrinth; Non- expansion
Category	Pillow Block
UNSPSC	31171511
Harmonized Tariff Code	8483.20.40.80
Noun	Bearing
Keyword String	Pillow Block
Manufacturer URL	http://www.rexnord.com
Manufacturer Item Number	PB22463H18W4
Manufacturer Internal Number	0125037
Weight / LBS	59
Nominal Bolt Center to Center	11.3 Inch 287 Millimeter
D	5.063 Inch 128.59 Millimeter
Bolt Spacing Maximum	0 Inch 0 Millimeter
Actual Bolt Center to Center	11.8 Inch 300 Millimeter
d	3.938 Inch 100.025 Millimeter
Bolt Spacing Minimum	0 Inch 0 Millimeter
B	4.25 Inch 107.95 Millimeter